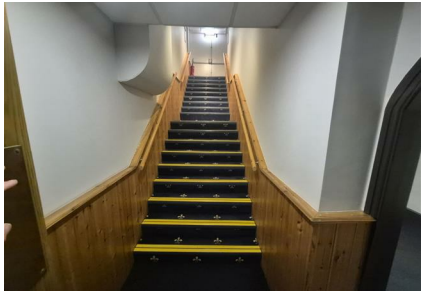
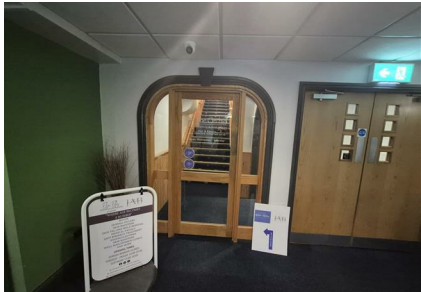


WORTLEY ROAD, ROTHERHAM, S611QN

£200 Per Week

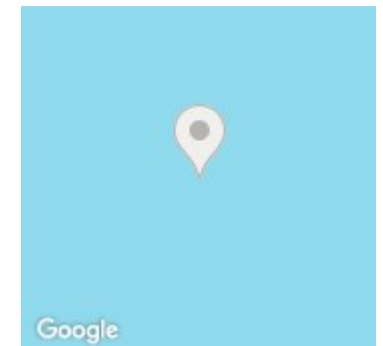
Council Tax Band: A



Fantastic opportunity to rent a modern space in a well know health club in the Kimberworth area of Rotherham. The unit is located on the first floor surrounded by a variety of other businesses. ranging from coffee shops, barbers and beauty. The unit would be ideal for someone looking to set up in a thriving environment. All bills are included and can be rented at £ 200 per week will be also be advertised within the club social media platforms.



Open House South Yorkshire



Energy Efficiency Rating		
	Current	Potential
<i>Very energy efficient - lower running costs</i>		
(92 plus) A		
(81-91) B		
(69-80) C		
(55-68) D		
(39-54) E		
(21-38) F		
(1-20) G		
<i>Not energy efficient - higher running costs</i>		
England & Wales	EU Directive 2002/91/EC	